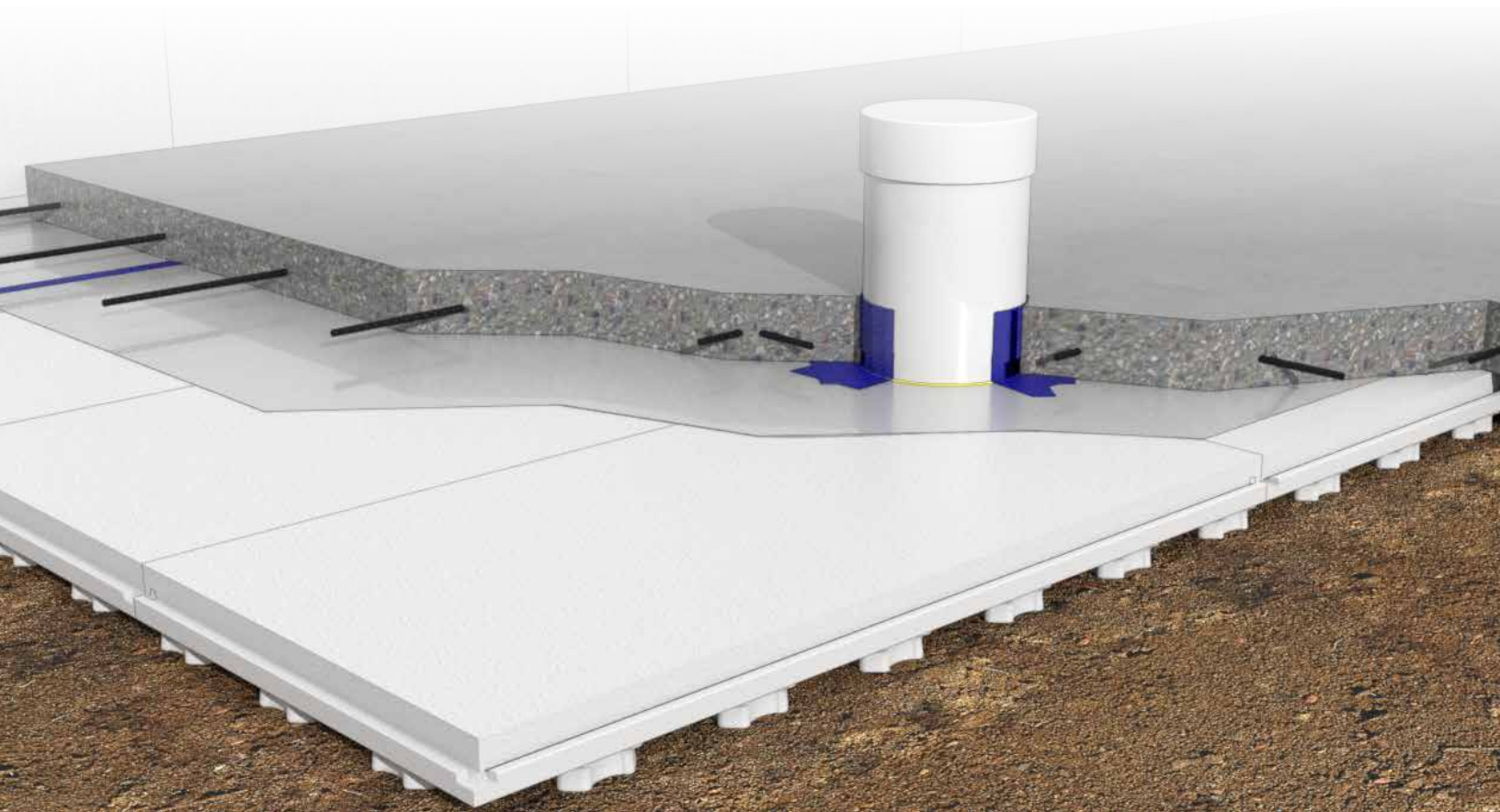




RADON PROTECTION. CONTINUOUS INSULATION. ONE SMART PANEL.

**Heat-Sheet® Heavy Doubles as Under-Slab Insulation and
a High-Performance Radon Diffusion Layer—Saving Time,
Improving Efficiency, and Keeping Occupants Safe.**



Protect Health. Boost Comfort. Save Energy

Heat-Sheet.com

Radon Protection, Comfort, and Efficiency— All in One

A high-performance building isn't just about structure—it's about protecting health, improving comfort, and boosting efficiency. Heat-Sheet® Heavy tackles all three at once, making radon compliance simple while adding everyday benefits your clients will feel.

THREE DIMENSIONS OF PERFORMANCE:



HEALTH

Radon is a leading cause of lung cancer in non-smokers. Heat-Sheet® Heavy provides a continuous, NRC-tested diffusion layer to safely vent radon.



COMFORT

Continuous below-slab insulation keeps floors warmer, reduces drafts, and improves occupant experience.



EFFICIENCY

A stronger thermal break lowers energy consumption, saving money every month.

RADON ROUGH-INS ARE CODE-MANDATED

- Canada – Required in all new dwellings (NBC 2020).
- U.S. – Required where local ordinances apply.
- Commercial – Required in Canada & U.S. where codes call for radon mitigation.

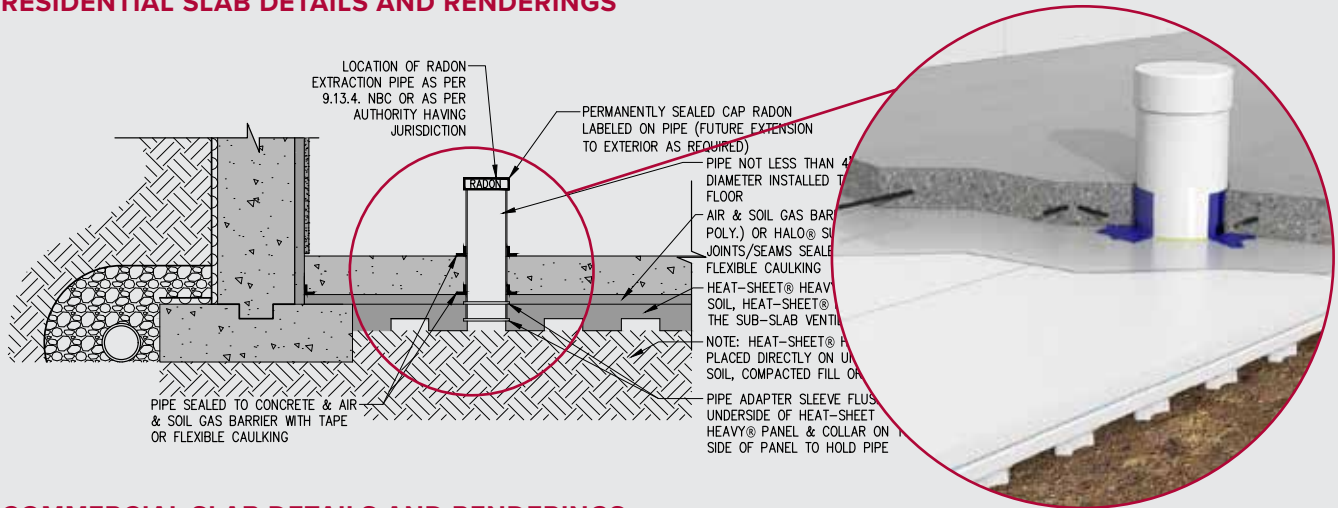
INSULATION AND RADON CONTROL IN ONE PANEL

- 50% more permeable than 4" (0.1m) of clean granular material!
- Compact (2' x 4') and easy to handle, Heat-Sheet® Heavy Panels securely interlock together
- Provides under-slab insulation in a variety of thicknesses to satisfy a range of insulation values.
- When installed "nodules-down", the interconnected channels allow soil gas movement between the ground and the air barrier system to a venting pipe.
- Eliminates the need for the granular fill that is typically required as the gas permeable layer under slabs. (Can also be applied on top of a layer of granular fill.)

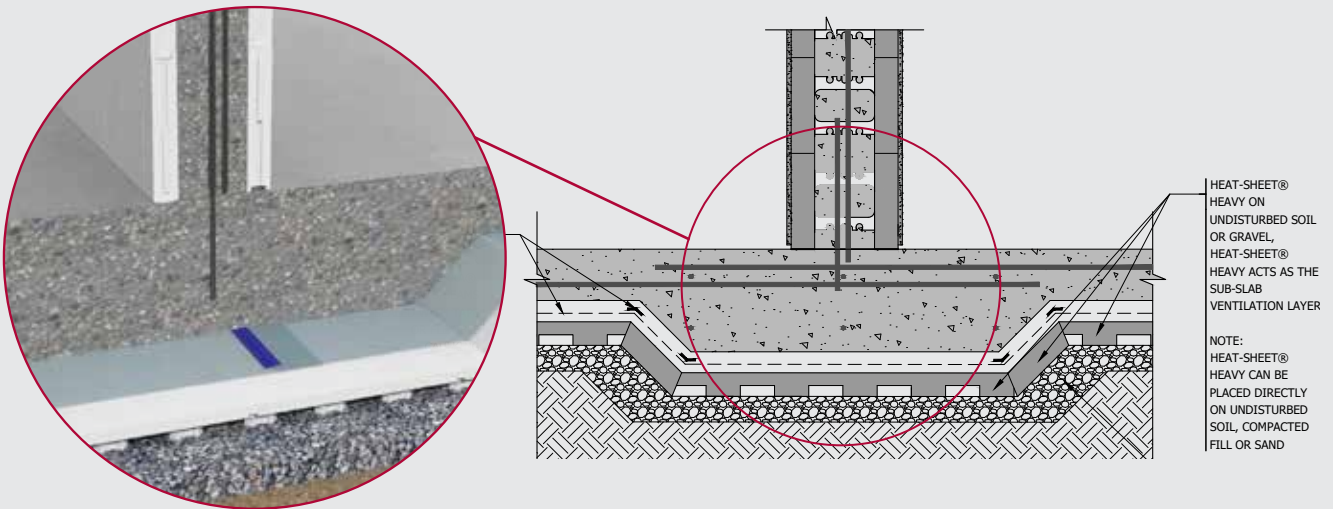
SIMPLE. SMART. PROVEN.

Heat-Sheet® Radon combines function and ease of installation with resources that help you get the job done right.

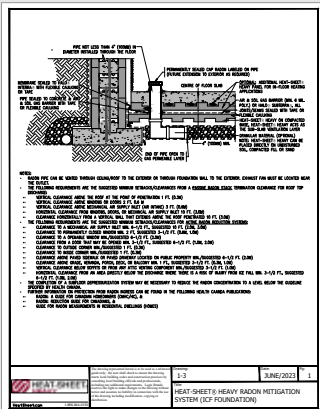
RESIDENTIAL SLAB DETAILS AND RENDERINGS



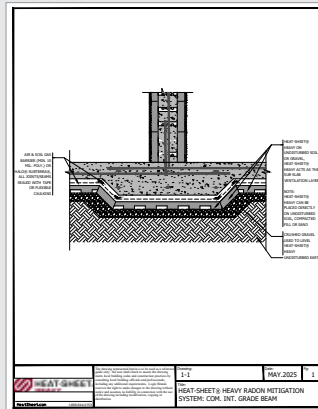
COMMERCIAL SLAB DETAILS AND RENDERINGS



DOWNLOADS



RESIDENTIAL SLAB DETAILS



COMMERCIAL SLAB DETAILS

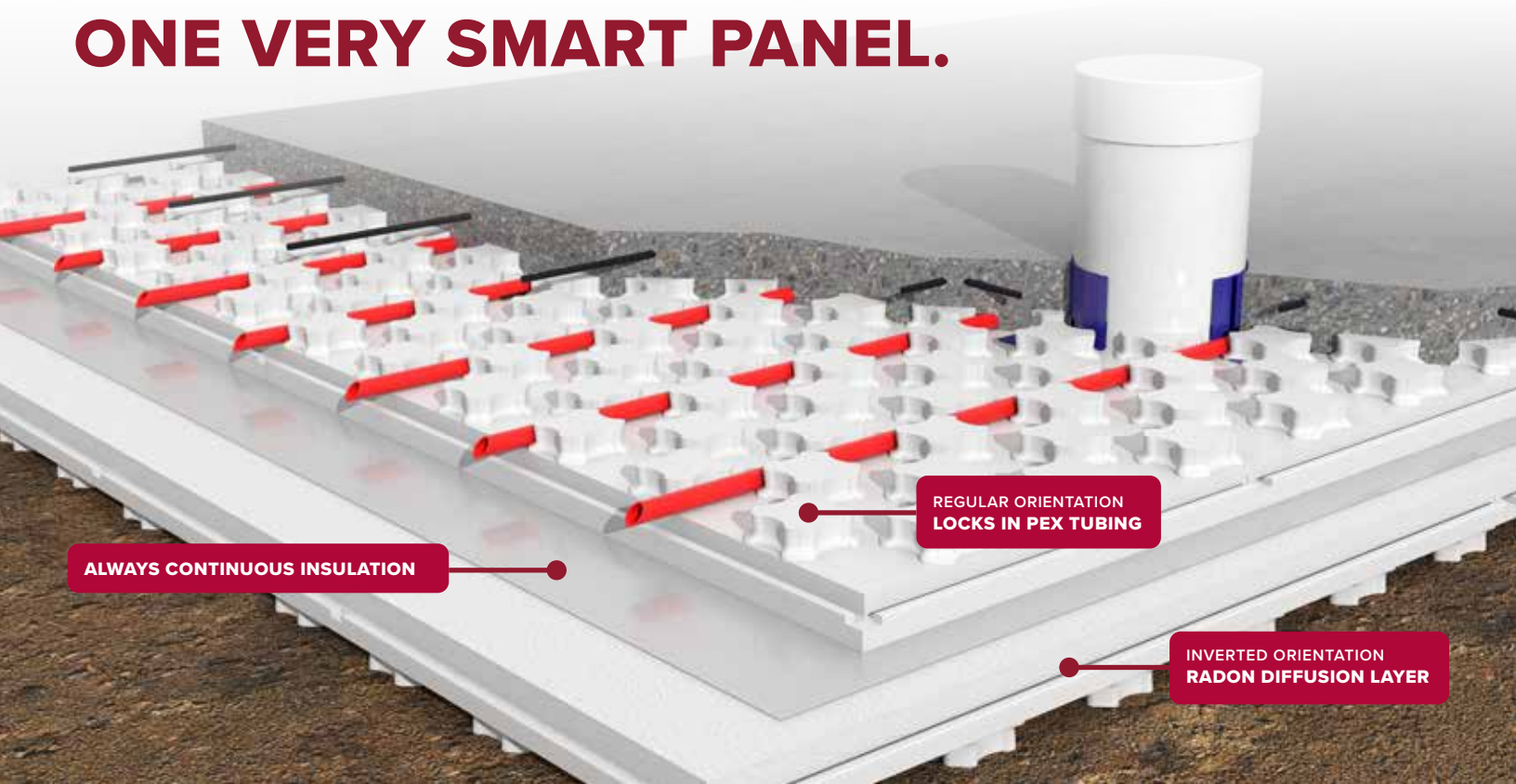


INSTALLATION MANUAL



TECHNICAL DATA SHEET

RADON PROTECTION. RADIANT READY. ONE VERY SMART PANEL.



ALWAYS CONTINUOUS INSULATION

REGULAR ORIENTATION
LOCKS IN PEX TUBING

INVERTED ORIENTATION
RADON DIFFUSION LAYER



REQUEST AN
IN-STORE DEMO

Get Heat-Sheet® Heavy For Your Next Project.

Find Heat-Sheet® Heavy near you:

- Regional Manufacturers
Built close to where you build.
- Local Dealers
Quick access to inventory.



FIND A DEALER
NEAR YOU

HEAT-SHEET.COM

FOR MORE INFORMATION:

Email us at info@logixbrands.com or Call your local Heat-Sheet® manufacturer below.



HEAT-SHEET®

BEAVER Thermal Solutions Inc.
Head Office: 11581 - 272 Street
Acheson, AB Canada T7X 6E9
#215-44393 Simpson Rd.
Chilliwack, BC Canada V2R 5M3
888.453.5961
bvrthermal.com

Form Solutions
840 Division St.
Cobourg, ON
Canada K9A 5V2
888.706.7709
FormSolutions.ca

Form Systems
P.O. Box 16923
Wichita, KS
US 67216
888.838.5038
FormSystemsInc.com

AMC Foam
Technologies
35 Headingley Rd.
Headingley, MB
Canada R4H 0A8
877.789.7622
AMCFoam.com

A PRODUCT BY
LOGIX
BRANDS

© Copyright Logix Brands Ltd. 2025 All rights reserved.

No part of the work contained herein as covered by this copyright may be reproduced or used in any form, or any means – graphic, electronic or mechanical, including without limitation photocopying. By using these products, you agree to assume all risks associated therewith. See LogixBrands.com/Disclaimer-General for a full copy of disclaimer.